



64 , Lulworth Place, Warrington, , , WA4 6FG

Property Features

Property Summary

64 Lulworth Place, Warrington, WA4 6FG *NO CHAIN* This modern 2 bedroom 2nd floor apartment is situated in the sought after Walton Locks development within walking distance of Stockton Heath. Comprising Two Bedrooms and Two Bathrooms , Modern Kitchen with integrated appliances, and open plan Lounge / Dining leading out onto Balcony. The property comes with allocated parking. Ideal investment or First Time property. Call now to arrange a viewing

Price
**Offers in excess of
£140,000**

Speak with our Sales
Adviser Today to Arrange a
Viewing!

OAKLEAF HOMES
Older homes backed by Barratt.

www.oakleafhomes.co.uk

0161 855 2855

These particulars are intended only as general guidance. The Company therefore gives notice that none of the material issued or visual depictions of any kind made on behalf of the Company can be relied upon as accurately describing any of the Specified Matters prescribed by any Order made under the Property Misdescriptions Act 1991. Nor do they constitute a contract, part of a contractor or warranty. *Estimated rental yield figures are calculated using information supplied by the marketing agent and are based on the original market price. The rental yield figure should only be used as a guide and we strongly recommend you seek independent financial advice before proceeding with any investment.

64 Lulworth Place, Warrington, WA4 6FG

NO CHAIN This modern 2 bedroom 2nd floor apartment is situated in the sought after Walton Locks development within walking distance of Stockton Heath. Comprising Two Bedrooms and Two Bathrooms , Modern Kitchen with integrated appliances, and open plan Lounge / Dining leading out onto Balcony. The property comes with allocated parking. Ideal investment or First Time property. Call now to arrange a viewing

Second Floor

Hall

Doors leading to bedrooms, bathrooms and kitchen/breakfast room.

Kitchen/Breakfast Room 6.51m (21'4") x 3.50m (11'6")

Fitted with a matching base and eye level units, 1+1/2 bowl stainless steel sink, with drainage area to side, laminate flooring, fitted oven with electric hob, extractor fan above.

Bedroom 3.31m (10'10") x 2.87m (9'5")

Window to rear, fitted carpet, door leading to En-suite.

En-suite

Fitted with three suite with wash hand basin and shower.

Bedroom 4.50m (14'9") x 2.74m (9')

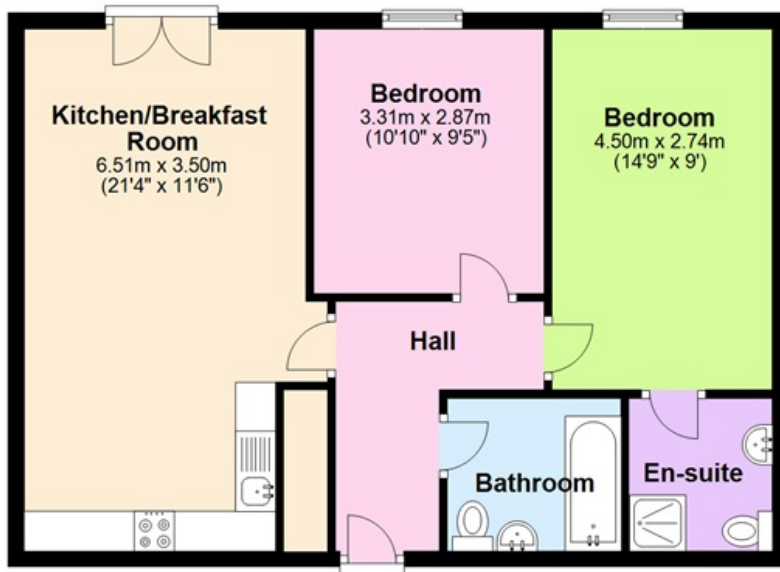
Window to rear, fitted carpet.

Bathroom

Fitted with three suite with bath, wash hand basin and WC, vinyl flooring.

Floorplans

Ground Floor



This floor plan is for illustrative purposes only and is not to scale. Where measurements are shown, these are approximate and should not be relied upon. Total square area includes the entirety of the property and any outbuildings/garages. Sanitary ware and kitchen fittings are representative only and approximate to actual position, shape and style. No liability is accepted in respect of any consequential loss arising from the use of this plan. Reproduced under licence from Evolve Partnership Limited. All rights reserved.
Plan produced using PlanUp.

Map

